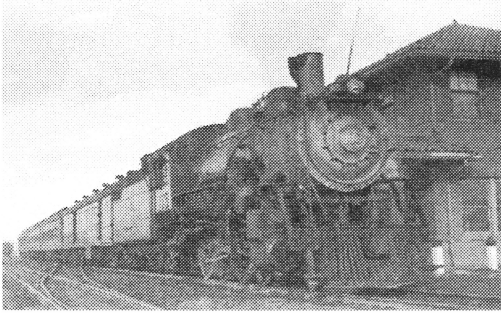


## PUZZLE #8 — PASSENGER EXCURSIONS



The Denver Midland passenger services department has done an amazing job of selling passenger business this summer. Five different organizations (including the Woodville High School marching band) have each chartered an excursion train over the D.M., each going to a different destination (one of which is Pueblo, Colo.). Of course, this extra business put a strain on the D.M. operating department: each one of the trains was delayed by some problem at the terminal (one had to wait for the dining car to be restocked by the commissary department). However, each of the trains finally got under way, powered by a different type of locomotive. From the information provided, determine the group which chartered the train and its destination, as well as the motive power on the head end (one train had the D.M.'s new steam-generator-equipped F-3's) and the event which delayed the train's departure.

as well as the motive power on the head end (one train had the D.M.'s new steam-generator-equipped F-3's) and the event which delayed the train's departure.

1. The five trains are: the VFW special, the one going to Albuquerque, the one that was delayed by a malfunctioning air conditioning unit in one of the coaches, the one going to Chicago, and the one powered by a Pacific (4-6-2). Both the train to Albuquerque and the train with the air conditioning problem had five cars each.
2. The train delayed by a sticking brake valve is neither the one going to Salt Lake City nor the one powered by an E-6 diesel.
3. The Elks Lodge special, which didn't have a problem with its air conditioning, went to Omaha. The train hauled by the 4-8-2 (which isn't the Shriners special) wasn't going to Salt Lake City.
4. The Shriners special, which isn't going to Chicago, was delayed because most of the passengers missed the bus and arrived late at the depot. The 4-8-4, which hauls a train of eight cars, is not powering the train to Chicago nor the one delayed because the conductor overslept. The Boy Scout special is the one pulled by an E-6.

		Destination					Motive Power					Problem				
		Albuquerque	Chicago	Omaha	Pueblo	S.L.C.	4-6-2	4-8-2	4-8-4	E-6	F-3	A/C	Brakes	Conductor	Food	Late Psgrs.
Organization	Boy Scouts															
	Elks															
	Shriners															
	WHS Band															
	VFW															
Problem	A/C															
	Brakes															
	Conductor															
	Food															
	Late Psgrs.															
Motive Power	4-6-2															
	4-8-2															
	4-8-4															
	E-6															
	F-3															

Group	Destination	Power	Problem