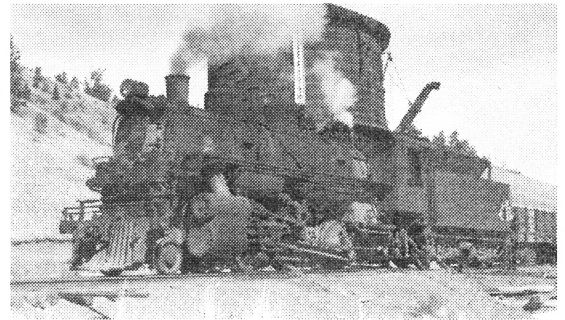


PUZZLE #3: THE CARBONDALE BRANCH

All the information one would need to construct the Employee Time Table for the Denver Midland's Carbondale Branch is given below, but it's in the form of a logic puzzle. From the clues, can you determine the distances from the Junction to each of the five towns on the branch (none are in fractions of miles), as well as the railroad facility located in each town (oddly enough, the engine terminal, wye, car shops, and freight yard were built in four different towns!)?



1. Springdale is 10 miles farther away from the junction than the town with the freight yard; the town with this yard is twice as far from the junction as Fallbrook is.
2. Winterton is five miles farther from the junction than the town with the car shops, and is twice as far as far as Summerset.
3. The closest town to the junction is 15 miles away.
4. Autumnvale is farther than either the town with the Colorado & Southern interchange or the one with the engine terminal.
5. The wye isn't at Winterton.
6. The engine terminal isn't in Summerset.

**DENVER MIDLAND RAILWAY COMPANY
EMPLOYEE TIME TABLE NO. 43
MARCH 3, 1947**

CARBONDALE BRANCH		SOUTHBOUND — READ DOWN	
Station		Miles from Carbondale Junction	Facility
Carbondale Junction		0	Junction
1			
2			
3			
4			
5			
Carbondale		70	Coal Mine