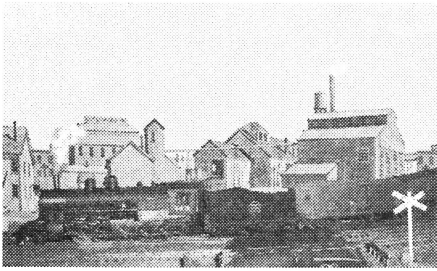


## PUZZLE #24 — THE ACME WIDGET CO.



The Acme Corporation had never been a big customer of the Denver Midland until their new traffic manager—a closet railfan, as it turns out—took over last fall. Before he arrived, Acme's Widget Works in Woodville had never sent out more than one carload of widgets by rail in any calendar month; but once he started work there, Acme became a regular D.M. customer, shipping a different whole number of carloads of widgets via our railroad each month from October through February. All

of the shipments in each month went to a different city (including Sacramento, Calif.). Determine the number of carloads of widgets shipped each month, and their destinations.

1. Acme shipped twice as many carloads of widgets in October as it shipped to Albuquerque; two months after the month in which they sent widgets to Albuquerque, they shipped nine carloads of widgets to another city.
2. Acme shipped widgets to Chicago the month before they shipped them to Omaha, and they sent five more carloads to Omaha than they did to Chicago.
3. The smallest number of carloads went to Boston, and the Boston shipments occurred either three months before or three months after the month in which five carloads were shipped.
4. The numbers of carloads shipped to Boston and Chicago were either both even or both odd.

	Destination					No. of Carloads			
	Albuquerque	Boston	Chicago	Omaha	Sacramento				
October									
November									
December									
January									
February									