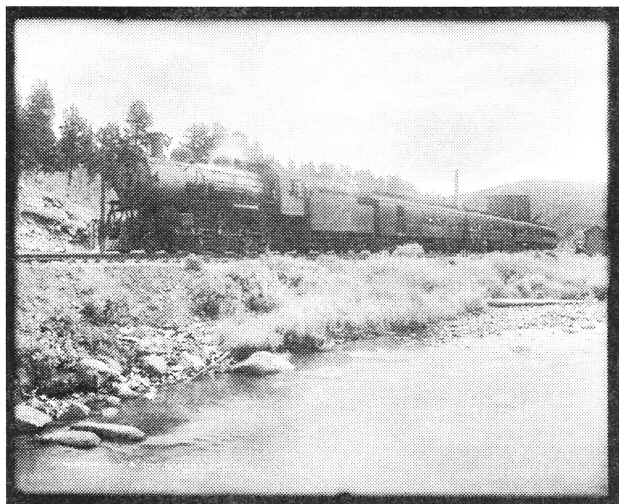


PUZZLE #13 — PASSENGER EXCURSIONS II



Passenger excursion business on the D.M. has slowed down a bit: although five passenger extras were scheduled out of Woodville this week (one went to Denver), they were scheduled far enough apart so that the same five cars could be used on each train. The cars—a chair car, lounge, diner, sleeper, and parlor car—all went to the coach yard between trips to be cleaned out and washed, and because we were on a tight schedule, they were reassembled into trains in whatever order they were ready at the coach yard, which was not the same order each time. In what order did the cars appear in each train?

1. The diner was the fourth car back from the engine on the train to Broomfield, and fifth on the train to Telluride.
2. On one train, the parlor car was coupled to the engine and the lounge car was last in the consist; on all the other trains, the lounge car was immediately ahead of the parlor car.
3. One train had the diner next to the engine and the parlor car fourth in the consist, and another train had the diner second and the parlor car last; on every other train the diner was the second car after the parlor car.
4. The fourth car in the train to Mayfield was the lounge car. The fourth car in the train to Norton was the parlor car.
5. On two trains—the ones to Norton and Telluride—the sleeper was coupled somewhere ahead of the chair car. On all the other trains, the chair car was somewhere ahead of the sleeper.

Train Destinations					
order	Broomfield	Denver	Mayfield	Norton	Telluride
1					
2					
3					
4					
5					